

# AMULET<sup>®</sup>

---

## BALLISTIC BARRIERS

...security beyond the perimeter<sup>™</sup>

Protecting the public from gun violence where they live, work and play

REPRESENTED BY: CHRIS EBERLING



ADVANCED BUSINESS SERVICES @ [WWW.OFFICEFURNITUREDONERIGHT.COM](http://WWW.OFFICEFURNITUREDONERIGHT.COM)  
[chris.eberling@abs-nm.com](mailto:chris.eberling@abs-nm.com) (505) 977-5787

# OUR MISSION

TO PROTECT PEOPLE FROM GUN VIOLENCE IN THE PUBLIC SPACE

## OUR TEAM...

- BALLISTIC SCIENCE ENGINEERS
- PRODUCT / MECHANICAL ENGINEERS
- SECURITY PROFESSIONALS
- COMMERCIAL FURNITURE MANUFACTURING
- ARCHITECTURAL + CONSTRUCTION INDUSTRY

# AMULET® APPLICATIONS



## Furniture

- Workstations (Cubicles)
- Reception
- Modular Walls
- Desking
- Seating (all types)
- Storage
- Accessories (White Boards)

## Architecture

- Walls
- Millwork
- Doors
- Signage

# TECHNOLOGY TESTING PROTOCOL

- Amulet® is independently tested by certified labs to National Institute of Justice (NIJ) ballistic performance criteria.
- Special tests (V50) are also performed to ensure Amulet® exceeds baseline NIJ test criteria – at a minimum of *200 feet/second above NIJ standards*.

Ratings of Bullet Resistant materials as identified by:  
**National Institute of Justice (NIJ) 018.01**

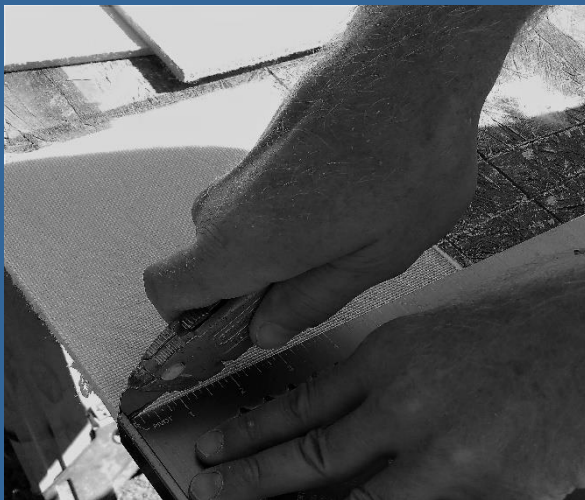
Rating	Ammunition	Weight (grains)	Weight (grams)	Min/Max (meters/sec)	Min/Max (feet/sec)	Number of shots
Level I	.22 long rifle high velocity lead	40	2.6	320 +/- 12	1050 +/- 40	5
Level I	.38 special round nose lead	158	10.2	259 +/- 15	850 +/- 50	5
Level II	.357 mag. jacketed soft point	158	10.2	425 +/- 15	1395 +/- 50	5
Level II	9mm full metal jacket	124	8.0	358 +/- 12	1175 +/- 40	5
Level IIA	.357 mag. jacketed soft point	158	10.2	381 +/- 15	1250 +/- 50	5
Level IIA	9mm full metal jacket	124	8.0	332 +/- 12	1090 +/- 40	5
Level III	7.62mm (.308 Winchester) full metal jacket	150	9.7	838 +/- 15	2750 +/- 50	5
Level IIIA	.44 mag. lead semi-wadcutter gas checked	240	15.55	426 +/- 15	1400 +/- 50	5
Level IIIA	9 mm full metal jacket	124	8.0	426 +/- 15	1400 +/- 50	5
Level IV	.30-06 armor piercing	166	10.8	868 +/- 15	2850 +/- 50	1



# TECHNOLOGY LEVELS OF PROTECTION

## AMULET®1 – HANDGUN

- 1/4 - INCH THICK & 1.3 LBS/SF
- NON-DIRECTIONAL, FLEXIBLE” - BENDS TO CURVES
- INHERENTLY FLAME RESISTANT, NON-TOXIC & MOLD RESISTANT
- CAN STAPLE TO, CAN GLUE TO (CONSTRUCTION ADHESIVES), CAN SCREW INTO !
- CUTS WITH UTILITY KNIFE OR NON-RECIPROCATING SAW (NO TEETH!)
- APPLICATIONS: SYSTEMS FURNITURE, SEATING, MILLWORK-NEW & RETROFIT SOLUTION

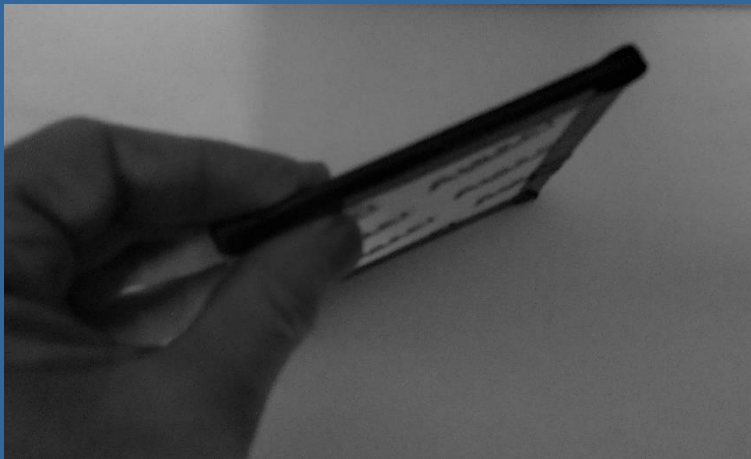




# TECHNOLOGY LEVELS OF PROTECTION

## AMULET<sup>®</sup> 2 - HANDGUN

- 1/4 - INCH THICK
- .90 LBS/SF (JUST UNDER 1 LB/SF)
- “RIGID” – DOES NOT BEND TO CURVES
- MADE OF A DIFFERENT MATERIAL THAN AMULET<sup>®</sup> 1
- CAN STAPLE TO, CAN GLUE TO (CONSTRUCTION ADHESIVES), CAN SCREW INTO !
- CUTS WITH DIAMOND BLADE, OR WATERJET – LET AMULET CUT!
- APPLICATIONS: SAME AS AMULET<sup>®</sup> 1 – W/LIMITS (DOESN'T BEND)



**AMULET<sup>®</sup>**  
BALLISTIC BARRIERS

# TECHNOLOGY LEVELS OF PROTECTION

## AMULET® 3 - RIFLE

- 0.68 (~ 11/16) - INCH THICK
- 2.8 LBS/SF
- “RIGID” – MUST BE CUT BY AMULET
- “RIGID” – DOES NOT BEND TO CURVES





# TECHNOLOGY LEVELS OF PROTECTION

## AMULET<sup>®</sup> MA (MUTI-ATTRIBUTE) RIFLE

- 3/8" - INCH THICK & 11 LBS/SF
- "RIGID" MUST BE CUT BY AMULET



**AMULET<sup>®</sup>**  
BALLISTIC BARRIERS

# AMULET® QUALITY CONTROL

- Continual production verification testing assures highest quality standards are maintained.
- ‘Chain-of-Custody’ standards are implemented for traceability- from raw materials to finished ballistic panels.
- Certificate of Conformance provided with every panel shipped.
- Compliant to Buy American Act



**AMULET® PANELS, SEATING AND WORKSTATIONS AND  
INSTALLATION OF ALL-AVAILABLE ON GSA ADVANTAGE**

**GSA SECURITY CONTRACT # GS-07F-5695P**





# AMULET® APPLICATIONS

## AMULET LECTERN

### AMULET®BALLISTIC BARRIER PROTECTION FOR PUBLIC SPEAKERS

Public speaking presents its own challenges, no matter how friendly the audience. There are also those instances where a speaker's words are met with hostility which has the potential to lead to violence. In these cases, a speaker's personal safety becomes a priority.

Security experts agree that mitigating a physical threat, especially that from ballistic violence, should include a robust protective element. This is why **Amulet®Ballistic Barrier** technology is now hidden within beautiful Lectern furniture.



Amulet has teamed with several leading manufacturers who produce some of the world's most beautiful furniture products. Our newest Lectern series is no exception. While appearing to be both beautiful and functional, it is also a life-safety 'device'.

Equipped with **Amulet®Ballistic Barriers** to help protect life from a full spectrum of ballistic threats - handgun, rifle, and blast - this Lectern also functions as intended. Included is a microphone, light, slide out shelf, and slide out step stool. The adjustable shelf allows for easy storage, while the fully-finished back panels are hinged to allow for wire access. Hidden casters provide for ease of movement.

Furniture product containing **Amulet®Ballistic Barrier** technology is viewed as capital equipment and considered a life-safety 'device'. As such, their purchase may be tax deductible (refer to federal tax guidelines). In addition, federal, state, and local government agencies may be entitled to US Homeland Security Grant Program funds for purchase (USHSGP administered by FEMA).

Amulet contract furniture products are available in a variety of configurations, fabrics, finishes, and surfaces.

**Amulet Intercept™** connectivity option available

For More Information on these and other Amulet Technologies:  
[www.amuletbbs.com](http://www.amuletbbs.com) - email: [info@amuletbbs.com](mailto:info@amuletbbs.com)



Amulet Protective Technologies, Inc. - [www.amuletbbs.com](http://www.amuletbbs.com) - All Rights Reserved

## AMULET MOBILEBOARD™

### A Work Tool with the Ability to Protect Life

The mobile markerboard is a tool common to work and school environments. Now, with **Amulet®Ballistic Barrier** technology hidden inside, it becomes something dramatically better...a life-safety device.

Why utilize a markerboard to protect life during an Active Shooter event? Simple. It is the essence of what we do - deliver state-of-the-art ballistic protection to public environments...invisibly. Protecting life without disturbing it.

Many security experts agree that mobile markerboards are an excellent form factor for the application of ballistic barriers. However, it takes **Amulet®Ballistic Barrier** technology to turn an ordinary structure into an extra-ordinary one.

The **Amulet Mobileboard™** stops and absorbs a full spectrum of ballistics, including those from handgun, rifle and blast. It is uniquely designed to provide complete coverage for better protection should the unthinkable happen.

Features available with the **Amulet Mobileboard™** include...

- Panels connect to form a safe space
- Certified to meet NIJ/UL test standards
- Variety of surfaces and finishes available
- Available in various heights and widths
- Easy-roll lockable casters for securing
- Opposing grab-handles optional

**Amulet Intercept™** connectivity option

For More Information on these and other Amulet Technologies:  
[www.amuletbbs.com](http://www.amuletbbs.com) - email: [info@amuletbbs.com](mailto:info@amuletbbs.com)



Amulet Mobileboard™ - 'single' example shown



Amulet Protective Technologies, Inc. - [www.amuletbbs.com](http://www.amuletbbs.com) - All Rights Reserved



# AMULET® APPLICATIONS

## AMULET RETROFIT™ KITS

### TRANSFORMING A WORKSPACE INTO A SAFE PLACE

Security protocols are designed to mitigate threats and protect life and property. Yet, even the best plans and procedures can quickly be forgotten when confronted by an Active Shooter. Human behavior often causes us to 'freeze' in place, or 'duck and cover', when faced with immediate danger.

The application of **Amulet®Ballistic Barriers** to the workstations, casegoods and even seating of virtually all brands and types is a new and powerful security measure. Amulet technology can be found hidden within a wide range of office furniture products.

- For the existing office with an investment in workstations and casegoods, Amulet offers **Amulet Retrofit™ Kits**, which are affordable and easy & quick to install
- Many task chairs can be adapted with the **Amulet Retrofit™Seatback Kit**, a sleeve that can be slid over the top of most chair backs for added protection
- When you expand for new staff, kits can be added at time of installation



Left: Herman Miller Inc., Ethospace workstation  
Bottom: Amulet Retrofit™ applied – ext. tiles removed



For More Information on these and other Amulet Technologies:  
[www.amuletbbs.com](http://www.amuletbbs.com) – email: [info@amuletbbs.com](mailto:info@amuletbbs.com)

**AMULET**  
BALLISTIC BARRIERS

Amulet Protective Technologies, Inc. - [www.amuletbbs.com](http://www.amuletbbs.com) - All Rights Reserved

## AMULET RECEPTION

### FRONT-LINE PROTECTION FOR THE FRONT OFFICE

Reception is where first impressions are typically made and where first contact often occurs entering a facility. Keeping front office personnel safe from harm during an Active Shooter event can be challenging, but with **Amulet®Ballistic Barriers** it is possible.

**Reception** and **Information** stations can now provide the same level of ballistic protection found within today's most advanced saferooms thanks to Amulet technology. **Amulet®Ballistic Barriers** are thin in profile and light in weight, making them uniquely compatible with these structures. Protecting life invisibly while hidden within.



Amulet has teamed with several leading manufacturers who produce some of the most beautiful furniture products. The result is Reception, Information and other furnishings now with **Amulet®Ballistic Barriers** built in.

There are also many options:

- **Amulet TA™** - Transparent Armor can be applied to the work surface to protect staff while still providing visibility and conversation
- **Amulet Intercept™** ballistic detection system available - Panic Button available for staff to reach to help before the danger even enters the building
- **Retrofit** – Amulet can be hidden within existing Reception/Information structures

Amulet contract furniture products are available in a variety of configurations, finishes, and surface options. Furniture product containing Amulet technology serve as a life-safety 'device' and viewed as capital equipment. As such, purchase may also be tax deductible (refer to federal tax guidelines).

For More Information on these and other Amulet Technologies:  
[www.amuletbbs.com](http://www.amuletbbs.com) – email: [info@amuletbbs.com](mailto:info@amuletbbs.com)

**AMULET**  
BALLISTIC BARRIERS

Amulet Protective Technologies, Inc. - [www.amuletbbs.com](http://www.amuletbbs.com) - All Rights Reserved

**AMULET**  
BALLISTIC BARRIERS



# AMULET® APPLICATIONS

## AMULET PUBLIC SEATING

### BALLISTIC PROTECTION FOR THE PUBLIC GATHERING SPACE

Public gathering spaces, such as hotel and corporate lobbies, are designed to be welcoming. They are also considered 'target rich' by security experts.

That is, they often present an opportunity to do significant harm to a great many people during an Active Shooter event. Frequently well populated, these environments challenge security professionals as they are 'open' and offer little physical protection to occupants should the unthinkable happen. This paradigm shifts when Amulet®Ballistic Barriers are deployed within structures common to these public spaces – 'soft targets' become hard.

Now, Reception Stations and Large-scale Upholstered Seating can help mitigate threats by physically protecting life from ballistic violence – bullets and blast – should it occur.



Amulet has teamed with several leading manufacturers who produce some of the world's most beautiful furniture products. Reception, Seating and other furnishings are now available with Amulet®Ballistic Barriers built in. Advantages include construction methods specifically designed to address bullet and blast containment while maintaining the beauty of the furniture.



Furniture products containing Amulet®Ballistic Barrier technology are viewed as capital equipment as they are considered a life-safety 'device'. As such, their purchase may be tax deductible (refer to federal tax guidelines). In addition, federal, state, and local government agencies may be entitled to US Homeland Security Grant Program funds for purchase (USHSGP administered by FEMA).

Amulet contract furniture products are available in a variety of configurations, fabrics, finishes, and surfaces.



## AMULET OFFICE

### BALLISTIC PROTECTION FOR OFFICE DESK AND WORKTABLE

The security industry recognizes that Active Shooter events can take place virtually anywhere and at any time. However, they most often occur in places of commerce. This includes the workplace.

That is why Amulet®Ballistic Barriers can be found within interior structures, including commercial furniture, throughout the work environment.



Office Desking systems and Work Tables can now help mitigate threats by physically protecting life from ballistic violence – bullets and blast – should it occur.

Amulet has teamed with several leading manufacturers who produce some of the world's most beautiful furniture products.



Reception, Seating and other furnishings are now available with Amulet®Ballistic Barriers built in. Advantages include construction methods specifically designed to address bullet and blast containment while maintaining the beauty and function of the furniture.

Furniture product containing Amulet®Ballistic Barrier technology is viewed as capital equipment as they are considered a life-safety 'device'. As such, their purchase may be tax deductible (refer to federal tax guidelines). In addition, federal, state, and local government agencies may be entitled to US Homeland Security Grant Program funds for purchase (USHSGP administered by FEMA).

Amulet contract furniture products are available in a variety of configurations, fabrics, finishes, and surfaces.

Amulet Intercept™ connectivity option available

For More Information on these and other Amulet Technologies:  
[www.amuletbbs.com](http://www.amuletbbs.com) - email: [info@amuletbbs.com](mailto:info@amuletbbs.com)





# AMULET® APPLICATIONS

## AMULET TA™

### NEXT GENERATION TRANSPARENT ARMOR

#### TRANSFORMING THE OFFICE ENVIRONMENT INTO A SAFEROOM

Security experts agree that saferoom access is a key component of any well thought out security plan. While these environments can help protect life during an Active Shooter event, delay in their access in a moment of panic can prove fatal. Fortunately, Amulet has an answer.

**Amulet TA™** - Transparent Armor is next generation bullet and blast resistant technology specifically designed to be compatible with the commercial office environment. Ultra-light in weight and superior in clarity, Amulet TA™ maintains the aesthetic of the modern workplace by transforming glass-walled offices and conference rooms into safe-rooms capable of protecting life during an Active Shooter or blast event.



Structures common to the office environment can now also serve as a state-of-the-art saferoom that reside immediately in the occupied space. Office personnel can now be well protected from handgun and rifle fire, as well as blast, should the unthinkable happen.



Private Office (left) and Conference Room (right) examples above.

**Amulet TA™** is available with a feature that provides instant concealment, transforming the glass surface from completely clear to opaque with the touch of a button – a additional security measure.

For More Information on these and other Amulet Technologies visit  
[www.amuletbbs.com](http://www.amuletbbs.com) or email us: [info@amuletbbs.com](mailto:info@amuletbbs.com)

**AMULET**  
BALLISTIC BARRIERS

Amulet Protective Technologies, Inc. - [www.amuletbbs.com](http://www.amuletbbs.com) - All Rights Reserved

## AMULET SAFE-WALL™

### A Simple and Elegant Saferoom Wall Solution

Saferooms or 'safe spaces' designed to protect life during an Active Shooter event are fast becoming a core component of the well thought out security plan. Unfortunately, introducing them into an existing commercial environment as a means of protecting life can also prove to be an expensive and time-consuming proposition.

Intensive structural tear-downs, costly construction and significant downtime can make creating a saferoom environment a truly challenging proposition. Fortunately, **Amulet Protective Technologies** has a simple yet elegant solution, the **Amulet Safe-Wall™**.

Designed to be applied to an existing wall structure during construction or as a retrofit, the **Amulet Safe-Wall System™** not only adds a beautiful aesthetic to virtually any environment, it is simple to install, which significantly reduces downtime. More importantly, while appealing on the outside, what lies beneath the surface – class leading **Amulet® Ballistic Barrier** protection – makes this saferoom system not only robust but truly exceptional.

It is worth noting that while there are savings to be had in time, labor, and construction costs over conventional wall structures, the **Amulet Safe-Wall System™** is also available in custom configurations as well as a variety of surface and finishes. Protecting life while adding beauty to virtually any space.



Amulet Safe-Wall™ Example Depicted - Above  
Amulet 1 NIJ Level 3A Application

For More Information on these and other Amulet Technologies visit  
[www.amuletbbs.com](http://www.amuletbbs.com) or email us: [info@amuletbbs.com](mailto:info@amuletbbs.com)

**AMULET**  
BALLISTIC BARRIERS

Amulet Protective Technologies, Inc. - [www.amuletbbs.com](http://www.amuletbbs.com) - All Rights Reserved

**AMULET**  
BALLISTIC BARRIERS

# ARCHITECTURAL INTERIORS



ASSA ABLOY



Architectural  
protection from within...

## Door Opening Solutions

**Amulet®** Commercial and  
Residential

'Multi-attribute' door  
application

- ballistic barrier
- weather event protection
- fire resistant
- acoustical
- GreenCircle Certified

**AMULET®**  
BALLISTIC BARRIERS



# PRESS & RECOGNITION



FENNEMORE CRAIG  
ATTORNEYS

DENVER | LAS VEGAS | NOGALES | PHOENIX | RENO | TUCSON

VENTURE ACCELERATOR AWARD

MANUFACTURERS

**Bullet-Absorbing Technology for Airport Seating Wins Top Homeland Security Award**

The Business of Furniture | [Subscribe at bof.press](#) | November 29, 2017

MANUFACTURER

**Industry-First Bullet and Blast-Resistant Technology Unveiled for Airport Seating**

The Business of Furniture | [Subscribe at bof.press](#) | March 22, 2017

HOMELAND  
SECURITY [TODAY.US](#)

**Airport & Aviation Security  
Bullet, Blast Protective Tech Integrated Into Public Space Seating**  
By: Homeland Security Today Staff  
03/15/17



The Business of the  
Contract Furnishings Industry

**MMQB**  
The Monday Morning Quarterback



PHOENIX  
**Business  
Journal**

The  
New York  
Times



**inBusiness** GREATER PHOENIX



**AMULET**  
BALLISTIC BARRIERS



# AMULET® KEY POINTS

- Amulet® is an ‘invisible’ safety device that is hidden within commercial furnishings and works with human behavior; people ‘duck and cover’ instinctively.
- Amulet® is state-of-the-art, patent pending, *bullet-resistant* technology designed to be compatible with interior furnishings and made exclusively in the USA (Remember: nothing is ever “bullet-proof”).
- Amulet® absorbs bullets and shrapnel (like a catchers mitt ).
- Amulet® is hidden *within* furniture products and engineered to resist dislodging upon impact, even when hit multiple times from either direction.
- Amulet® is considered a critical layer of protection by Physical Security experts.

# AMULET® QUALITY CONTROL KEY POINTS

- Amulet® is independently tested by certified labs to National Institute of Justice (NIJ) ballistic performance criteria.
- Special tests (V50) are also performed to ensure Amulet® exceeds baseline NIJ test criteria - *150 feet/second above NIJ standards.*
- Continual and systematic production testing assures highest quality standards are maintained.
- 'Chain-of-Custody' standards are implemented for traceability- from raw materials to finished ballistic panels.
- Amulet® is thin, light-in-weight, non-toxic, fire and mold resistant.
- Retrofittable in most applications.





[www.AmuletBB.com](http://www.AmuletBB.com)



**AMULLEET®**

Must we waterjet cut as well

# **Ballistic Detection and Active Shooter Countermeasure Technology**

---

**A Cost-Effective Solution to Counter a Real-World Reality**

AVERAGE DURATION OF ACTIVE SHOOTER EVENT

**12**Minutes



AVERAGE **TIME** BEFORE FIRST 911 CALL IS PLACED

**5**Minutes

AVERAGE LAW ENFORCEMENT RESPONSE TIME

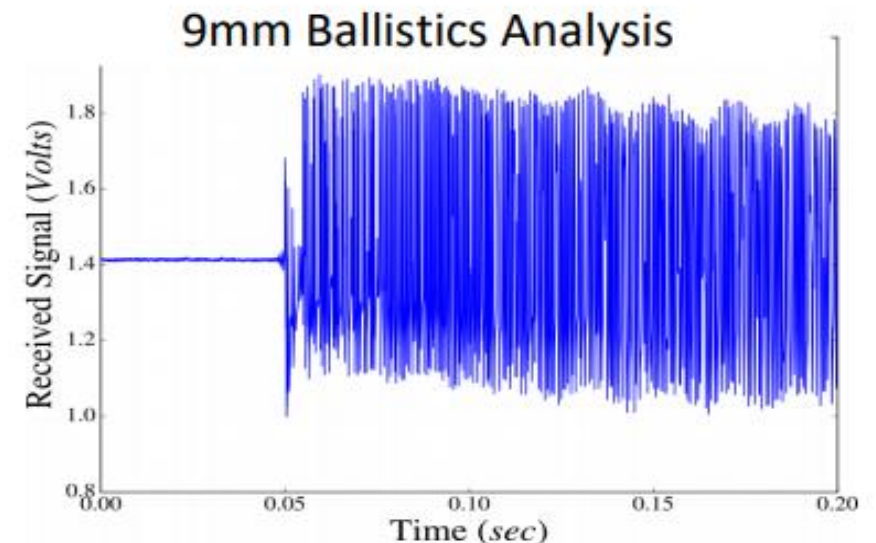
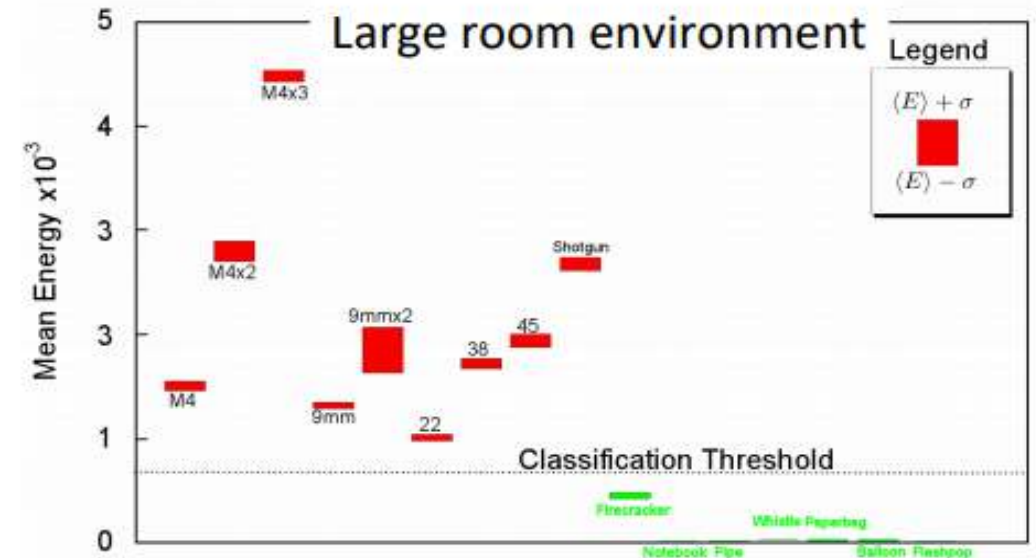
**18**Minutes

# INTERCEPT™ Energy Sensor

“Intercept™ Energy Sensor is the latest detection technology.”

Intercept™ was developed by the Department of Energy in response to the Sandy Hook tragedy. This patented gunshot detection technology is like no other shot detection technology in the industry.

The Intercept™ calculates energy level and waveform analysis to determine and validate firearm discharge events and ballistic data.





**AMULET INTERCEPT™**

**Emergency Automatic Ballistic Detection  
with  
Amulet® Ballistic Barriers**

---

Proven Technology Developed by:  
**US DEPARTMENT OF ENERGY**

# INTERCEPT™ Overview

---

## The Emergency Automatic Ballistic Lockdown System

\*Wireless \*Indoor \*Outdoor



### Lockdown

Provides immediate relief through lockdown capabilities within seconds of shots fired



### Notifications

Provides immediate notification to security staff and law enforcement of an active shooter situation by text, email and live video stream



### GPS Location

Provides GPS location of shooter and ballistic data of weapons being used



### Geo-Fencing

Provides “geo-fencing” capabilities with access control to keep the threat away



# Industries We Serve

---



**Education**



**Healthcare**



**Transportation**



**Energy & Mfg.**



**Critical Infrastructure**



**Public Safety**



**House of Worship**



**Government**



# Speed is Life - INTERCEPT™ Indoor

**1.** AUTOMATICALLY notifies SOC,EOC,RTCC within seconds of shots fired. Provides ballistic data, location of shooter and live video stream.

**2.** AUTOMATICALLY sends programmed threat notifications in the form of text messages and email within seconds of shots fired event.

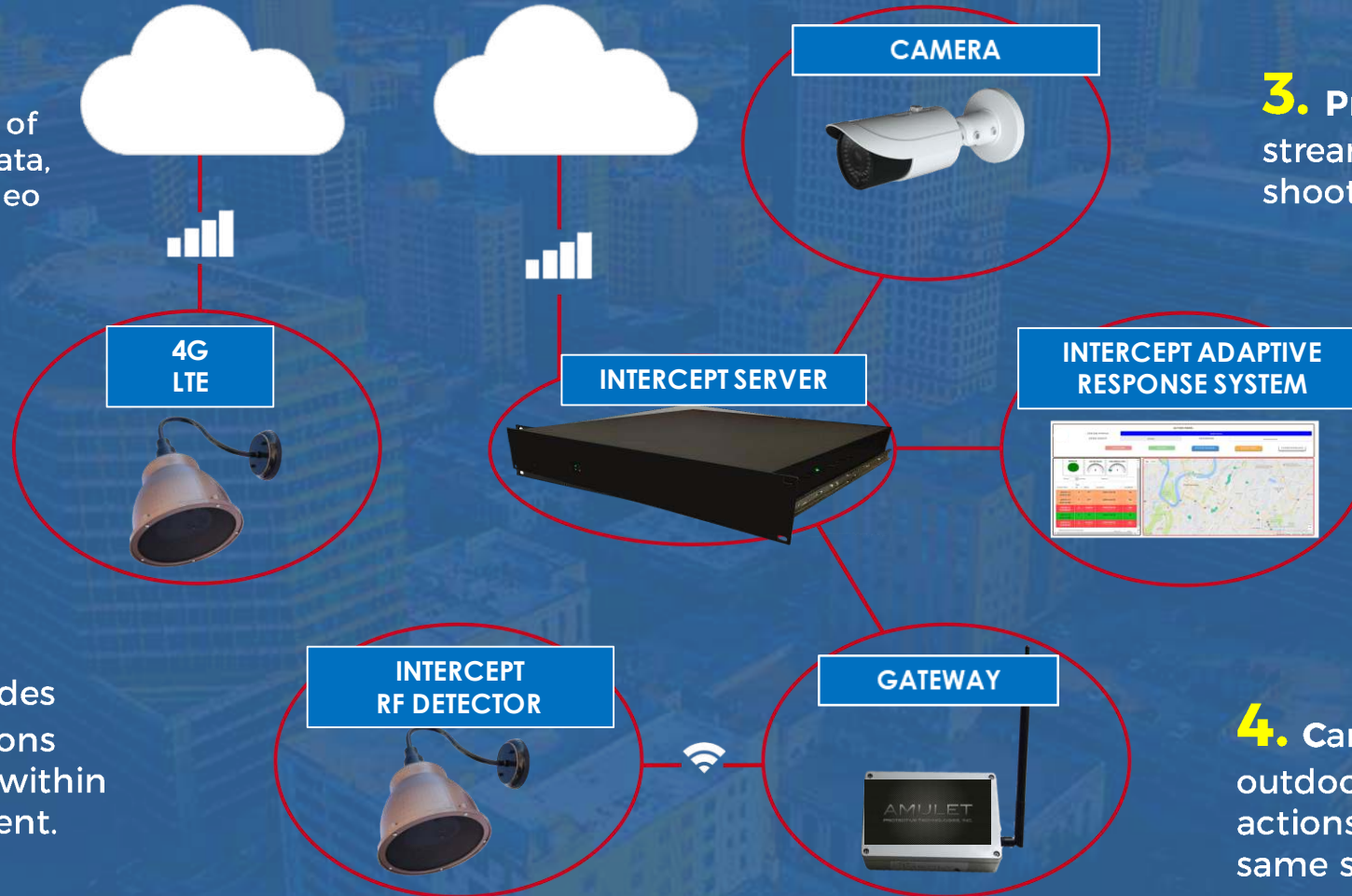
**3.** Provides real time video stream of nearest camera to shooter location.

**4.** Can lockdown soft target areas or “geo-fence” shooter based on preprogrammed adaptive response actions.



# INTERCEPT™ Outdoor

**1.** AUTOMATICALLY notifies SOC,EOC,RTCC within seconds of shots fired. Provides ballistic data, location of shooter and live video stream.



**2.** AUTOMATICALLY provides preprogrammed notifications text messages and emails within seconds of a shots fired event.

**3.** Provides real time video stream of nearest camera to shooter location.

**4.** Can combine indoor and outdoor detection and response actions seamlessly using the same server.



# Adaptive Response

**Intelligent multilayer comprehensive security counter measure algorithm generator !**

Each Sensor (or group of sensors) or Panic button can be selected to activate a specific adaptive response action. These actions include:



## Lockdown

Select specific doors / door groups for this response.



## Notifications

Select the specific message to be used with this response. (Email and Text)



## Message dissemination

Select the list of enrolled personnel that are going to receive the message.



## Camera stream

Assign cameras to specific detectors.



## Building location

Assign a specific building description / address for location message response.



## Relay board

Assign which relays are going to be activated which can provide additional adaptive responses.



## PA Message

Assign which message will be sent to the PA / Mass notification system.



## 911 call and phone notification

Assign messages sent to 911 and additional phone numbers to be called.

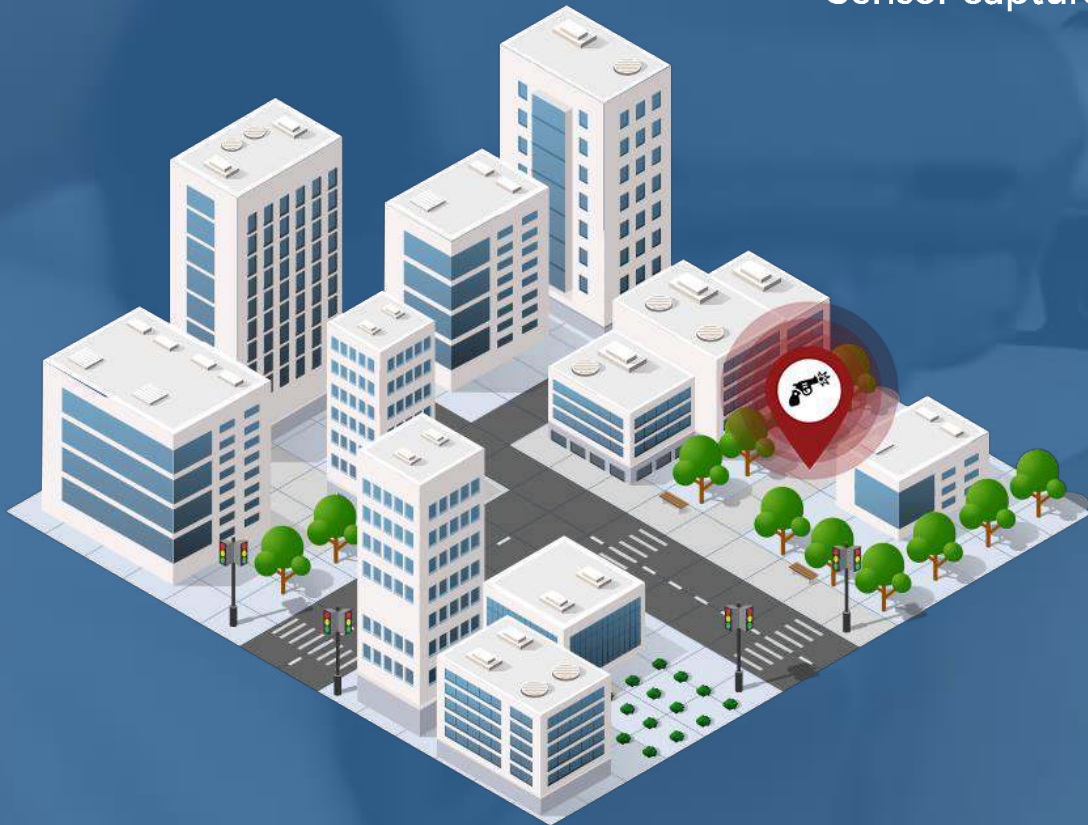


# How **INTERCEPT™** Works

---

## 1. Shots Fired

Sensor captures ballistic energy level.





# How **INTERCEPT™** Works

## 2. Validate & Report

Sensors detect, validate & report time and direction of threat with waveform sample.

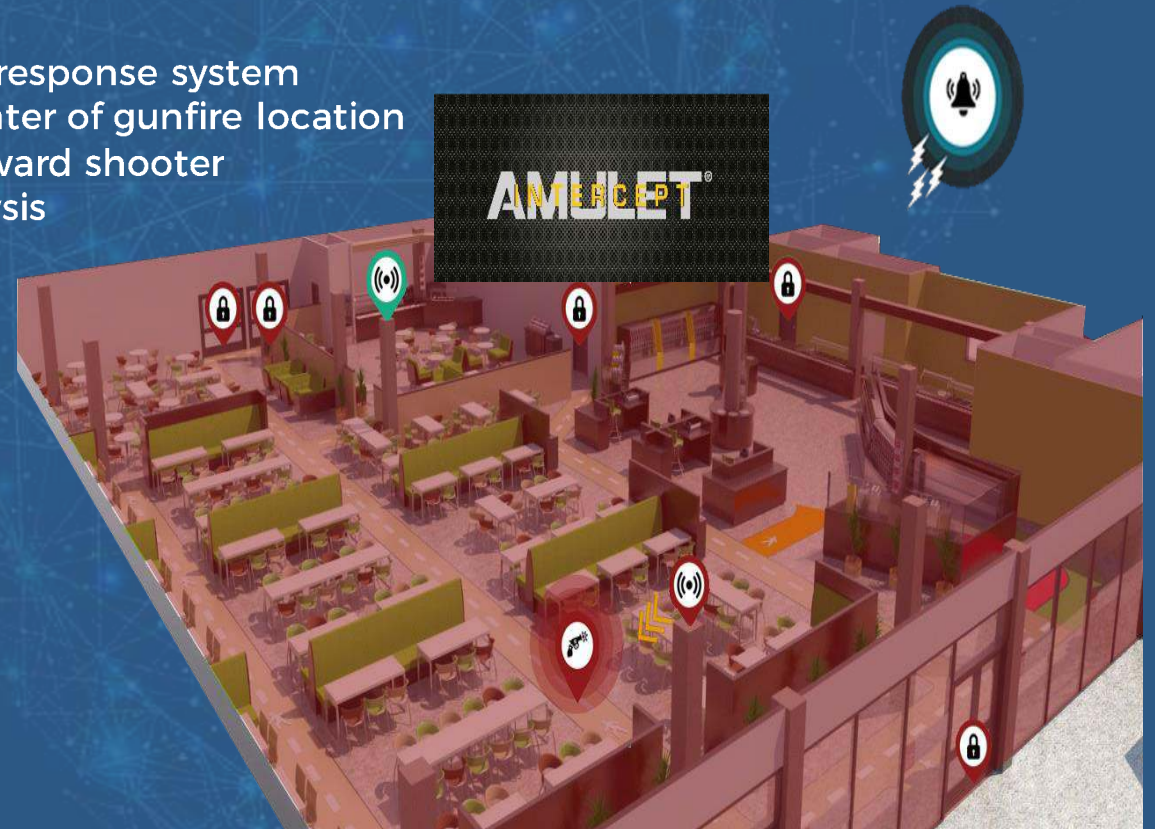
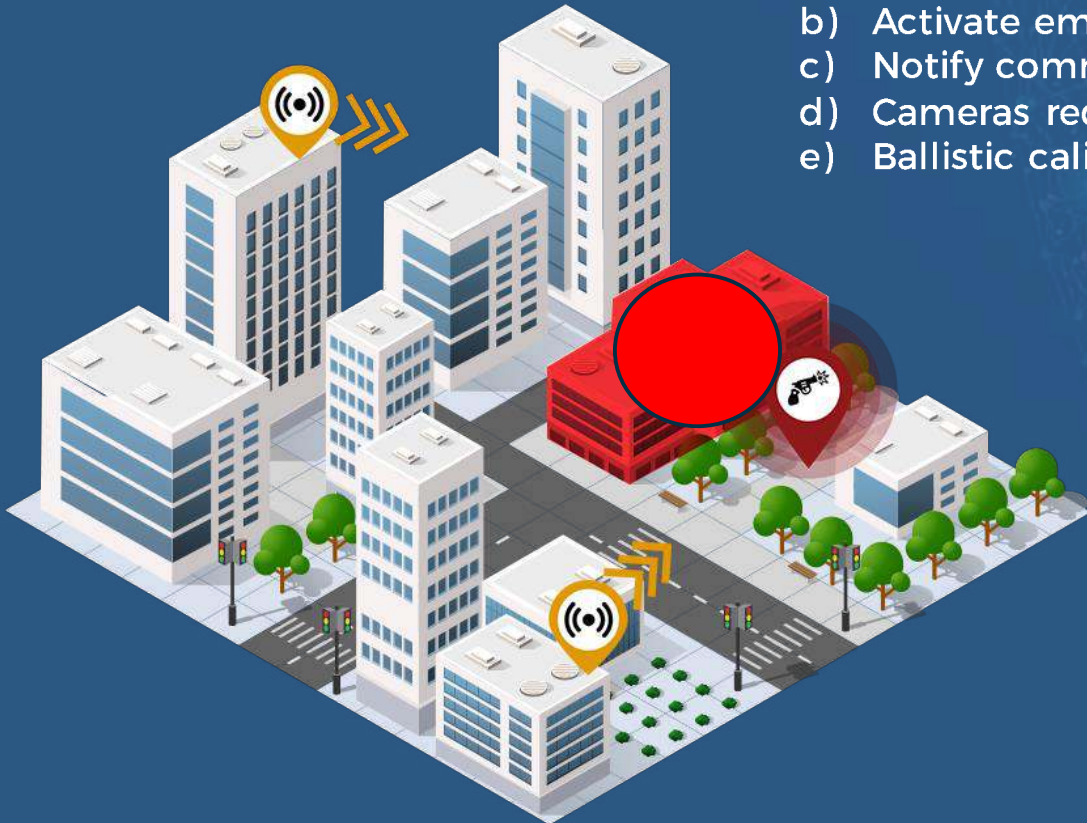




# How **INTERCEPT**<sup>TM</sup> Works

## 3. Intercept Takes Control

- a) Lock doors
- b) Activate emergency response system
- c) Notify command center of gunfire location
- d) Cameras redirect toward shooter
- e) Ballistic caliber analysis





# How **INTERCEPT**<sup>TM</sup> Works

## 4. Back to Normal

Resume normal operation mode

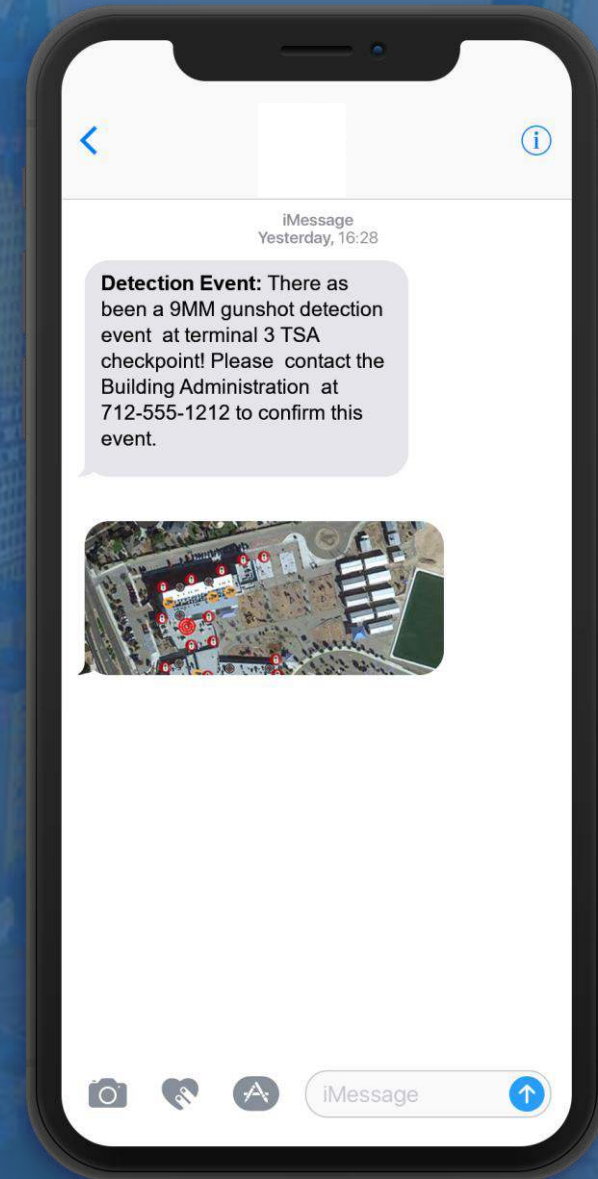




# Sample Message

---

**"There has been a 9MM gunshot detection event at terminal 3 TSA checkpoint! Please contact the Building Administration at 712-555-1212 to confirm this event."**



## ACTION PANEL

SYSTEM STATUS

System Normal

DOOR GROUP

Door Group Name

PASSWORD

\*\*\*\*\*

LOCKDOWN

UNLOCK

SYSTEM NORMAL

SHOTS FIRED

MAP TOOLS

## NOTIFICATIONS

Show ☒ entries

Search:

Event Time	Tag ID	Alert	Location	Enabled?
09/24/18 02:04:37	23	HB	Main Entry Exterior	Yes
09/24/18 02:02:56	22	HB	2nd Floor Conference	Yes
09/24/18 02:02:56	21	HB	2nd Floor Kitchens	Yes
09/24/18 02:01:54	12	HB	1st Floor Lobby	Yes
09/24/18 02:00:59	11	HB	Warehouse	Yes

Showing 1 to 5 of 932 entries (Filtered from 1,935 total entries)

Previous Next





SYSTEM STATUS

DOOR GROUP

MUTE

LOCKDOWN

UNLOCK

SYSTEM NORMAL

SHOTS FIRED

MAP TOOLS

ACTION PANEL

Gunshot

Door Group Name

PASSWORD

\*\*\*\*\*

NOTIFICATIONS

Battery Life

Self Test Failures

Total Detectors Active

Show ☐ entries Search

Event Time	Tag ID	Alert	Location	Enabled?
09/24/18 09:25:23	31	Gunshot	Warehouse	Yes
09/24/18 02:04:51	23	HS	Main Entry Exterior	Yes
09/24/18 02:03:56	22	HS	2nd Floor Conference	Yes
09/24/18 02:02:56	21	HS	2nd Floor Kitchen	Yes
09/24/18 02:01:54	12	HS	1st Floor Lobby	Yes

Showing 1 to 5 of 932 entries (filtered from 1,935 total entries)

PreviousNext



# System Components



**Intercept Server**

- External 120VAC, 60Hz, Single Phase Input (NEMA 5-15P) 24H UPS option.
- Host Firmware, Web Server
- IP Controlled Relay Board
- Dials Programmed Number(s) &
- Transmits Recorded Messages HTTP protocol over TCP/IP & POTS Linux.
- Can integrate with : Access Control, Video Surveillance, Mass Notification systems.
- Supports REST API



**Gateway**

- 12 to 15 Watts, Power Over Ethernet - POE
- Wireless RF to Sensor / Cat5-6e to EAGL System Control Unit, standard RJ45 connectors.
- 433 MHz - 10 Channel
- 500 feet indoor -10,560 FT Outdoor
- HTTP protocol over TCP/IP using REST
- UL94 - HB, designed to meet IP 66 & NEMA 4, 4X, 6, 6P, 12 & 13 7.87"L x 4.72"W x 3.56"H with detached antenna.



**Amulet® Ballistic Barrier Energy Sensor**

- Ballistic Detection Technology developed by the Department of Energy.
- Algorithm analyzes Energy and Waveform to eliminate false alarms.
- Wireless Range: Over 500 ft Indoor Ballistic Detection Range
- 100ft radius 31,400SF
- 433 MHz wireless frequency
- 7 year battery life
- Requires only one node per coverage area.



**Outdoor**

- Operates on the Industrial IoT LTE platform.
- No infrastructure required can mount almost anywhere.
- Uses advanced algorithm to eliminate false alarms
- Can operate on our 433MHz wireless band with up to 2 miles RF range (line of sight).
- 150 feet radius detection range
- 7 year battery life
- Weatherproof IP66



**Panic Button**

- Wireless Range: Over 500 ft Indoor.
- Battery life 7 years
- Send a daily HB just like a sensor
- Tamper switch!
- Using Adaptive response can be programmed for any function



# BALLISTIC ANALYSIS OPTION, INDOOR AND OUTDOOR

Can detect *shot* fired to Six Sigma accuracy (99.999+%)

Can detect *caliber* to 1 Sigma: (90%)

## Ballistic Analysis Configuration

Currently the Ballistic Analysis use status is : enabled

Enabled

## SHOT DATA

Tag Id	67
RTC	2/7/19 18:17:6.253
Floor Number	N/A
Location	The corner of 6th and Webber st
Room Number	N/A
Adj Variance	86436030
Alarm Threshold	7000000
Weapon Caliber Type	Rifle
Caliber Confidence Level	100%

Close



# Key Features

---

- ✓ Full facility lockdown capability fully automated if gunfire is detected (Preprogramed adaptive response actions) Exit/Egress is always possible.
- ✓ Integrates with most public address systems and wide area warning systems to alert building occupants of potential threats.
- ✓ Easy to install with capability to integrate the entire building security under one umbrella that includes: fire, burglar, CCTV, access control, chemical and biological sensors.
- ✓ LIVE video streaming is accessible via Intercept interface at all times.
- ✓ Real time data dissemination.
- ✓ Provides critical information to law enforcement and building officials enabling immediate and appropriate actions for optimal outcomes.
- ✓ Provide real time ballistic analysis.
- ✓ Provides facility card access control to deny access to those who do not belong.
- ✓ Mostly wireless, scalable and easy to install.
- ✓ Able to control multiple buildings utilizing the adaptive response model.

# Key Advantages

---

- ✓ Most advanced sensing technology
- ✓ Purchased not leased
- ✓ Wireless
  - Fastest / least expensive to install
  - Easiest to reconfigure
- ✓ Highest rate of detection accuracy
- ✓ Least expensive to maintain.
- ✓ Integration with Amulet Ballistic Barriers
- ✓ Integration of indoor and outdoor systems
- ✓ You own the data
- ✓ Least false positives



## ACTION PANEL

SYSTEM STATUS

System Normal

DOOR GROUP

None

PASSWORD

LOCKDOWN

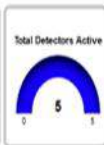
UNLOCK

SYSTEM NORMAL

SHOTS FIRED

MAP TOOLS ▾

## NOTIFICATIONS



Show ▾ entries

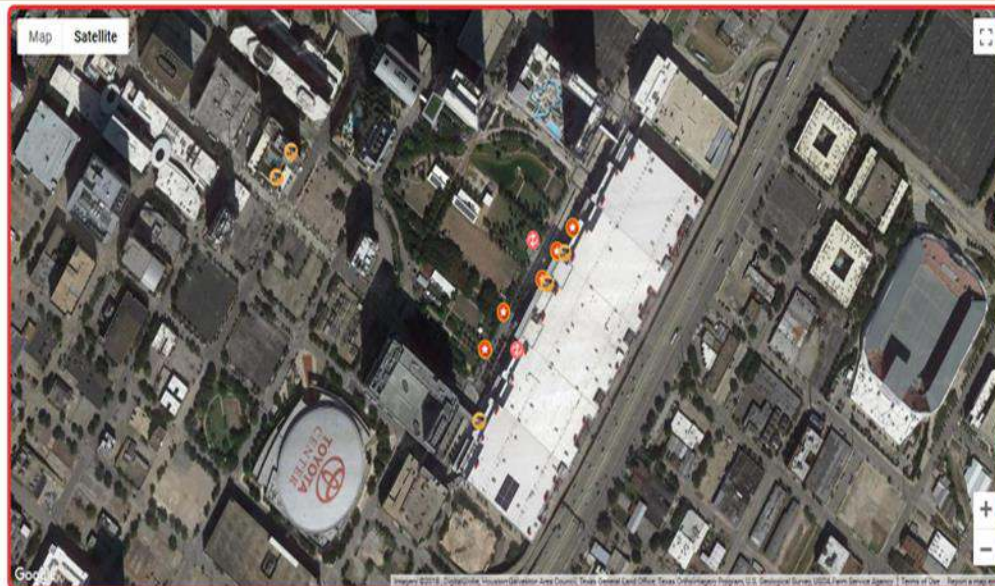
Search:

Event Time	Tag ID	Alert	Location	Enabled?
12/02/18 23:04:35	105	HB	ADLA and Dallas	Yes
12/01/18 23:04:36	105	HB	ADLA and Dallas	Yes
11/30/18 23:04:35	105	HB	ADLA and Dallas	Yes
11/29/18 23:04:36	105	HB	ADLA and Dallas	Yes
11/28/18 23:04:36	105	HB	ADLA and Dallas	Yes

Showing 1 to 5 of 173 entries (filtered from 174 total entries)

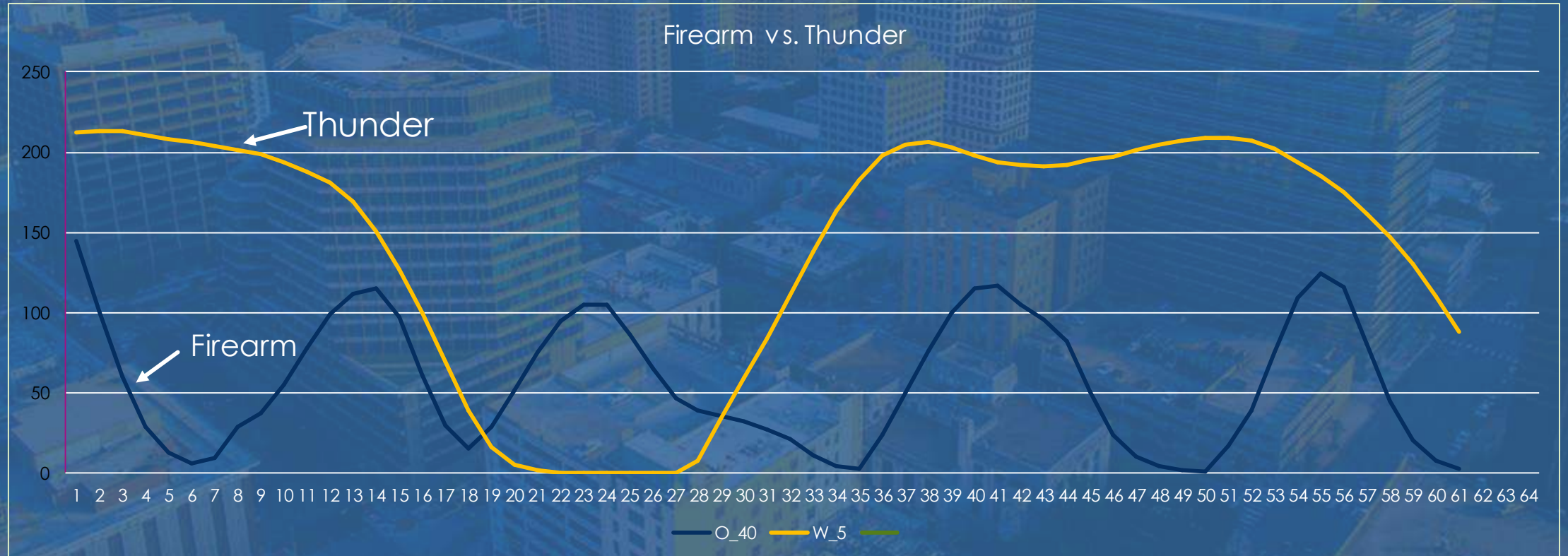
Previous

Next





# Waveform Algorithm (example)



# Gunshot Detection Competitor Comparisons



SCALE  
1/16"=1'-0"

CENTRAL LIBRARY

SECOND FLOOR

DRAWN: 6599

DRAFTER  
A.L.

A-2

## GSL Comparisons

- Product #A (52) Sensors
- Product #B
- Product #C
- Intercept



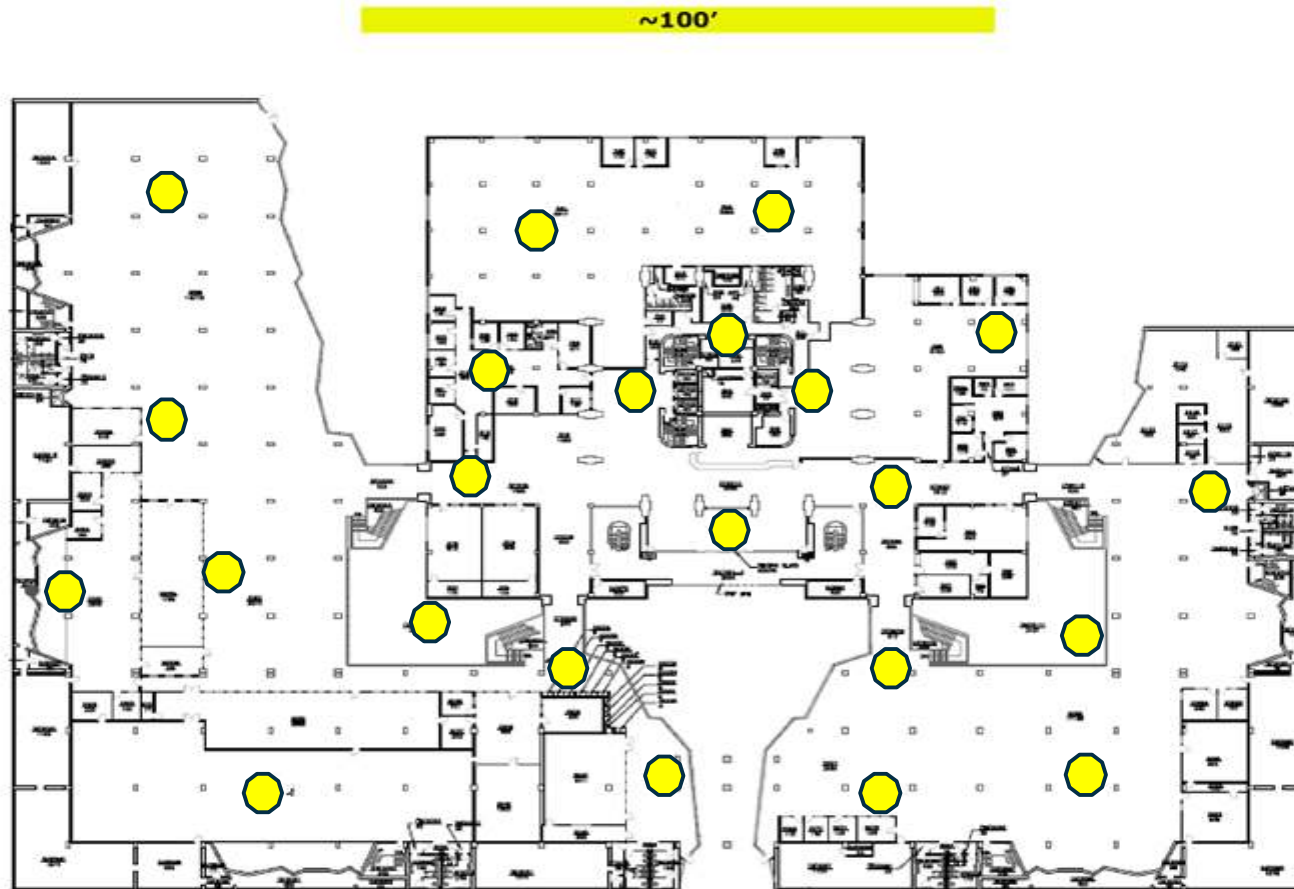
# Gunshot Detection Competitor Comparisons



## GSL Comparisons

- Product #A  
(52) Sensors
- Product #B (41) Sensors
- Product #C
- Intercept

# Gunshot Detection Competitor Comparisons



SCALE  
1/16"=1'-0"

CENTRAL LIBRARY

SECOND FLOOR

DRAWN: 6599

DRAFTER  
A.L.

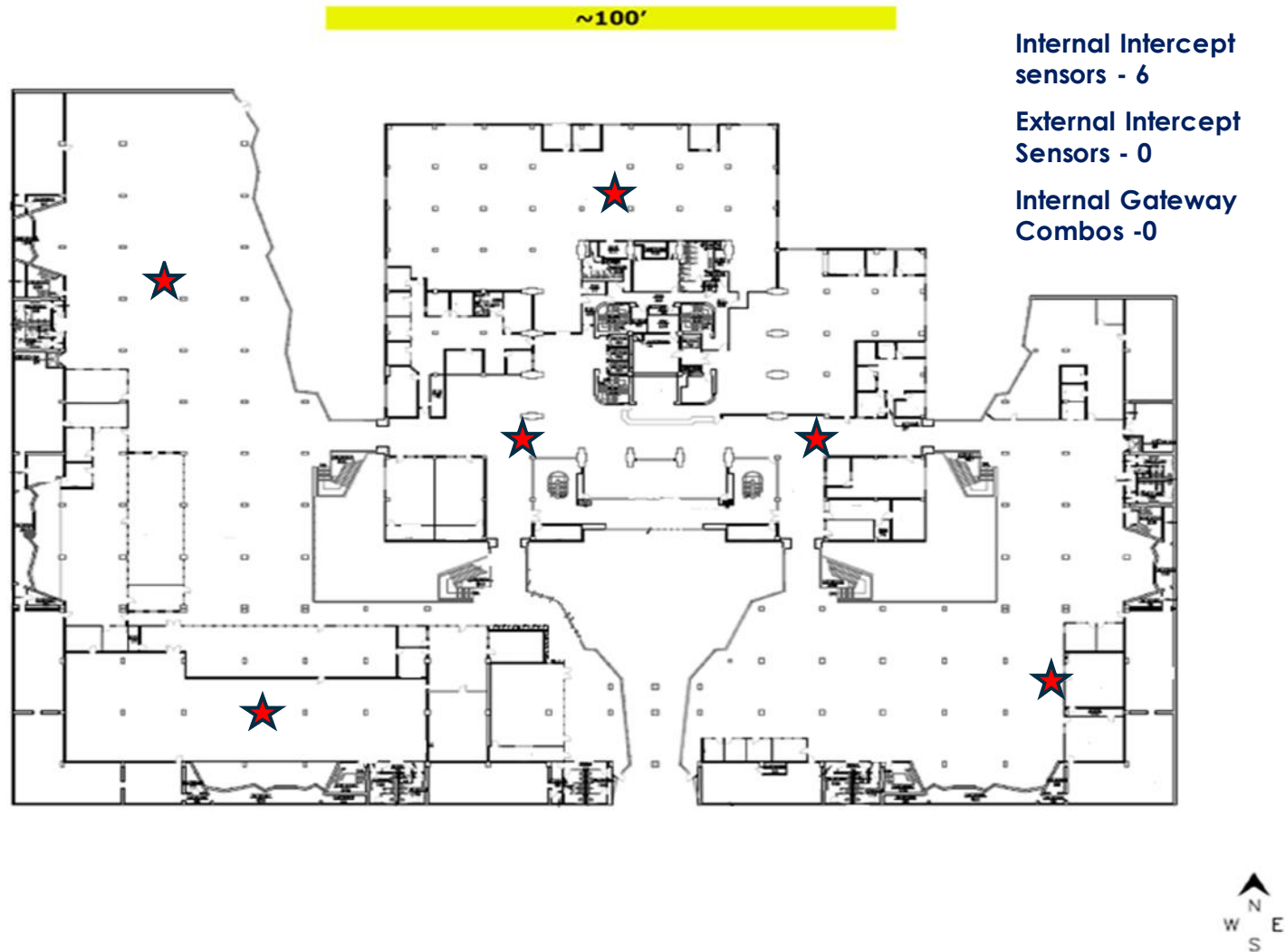
A-2

## GSL Comparisons

- Product #A  
(52) Sensors
- Product #B  
(41) Sensors
- Product #C (23) Sensors
- Intercept



# Ballistic Detection Competitor Comparisons



## GSL Comparisons

- Product #A (52) Sensors
- Product #B (41) Sensors
- Product #C (23) Sensors
- Intercept (6) Sensors

# Comprehensive integrated Solution!

Functionality	Intercept	SDS
Detection Range	100 feet	40 feet
Can detect .22 and Blast	YES	NO
Wireless	YES	NO
Can interface with any PA system with no additional cost	YES	NO
Integrate with Access control systems to control door groups	YES	NO
Unlimited message files for PA and Voip	YES	NO
Panic button option	YES	NO
Daily devices self-test and HBeat	YES	NO
Adaptive response per device <ul style="list-style-type: none"> <li>*access control</li> <li>* camera integration</li> <li>* Unlimited PA system control</li> <li>* Unlimited text and Email messages</li> <li>* Unlimited relay support (built in)</li> </ul>	YES	NO
Integrated dialer for 911 calls	YES	NO
Message portal	YES	NO
Ability to program the sensors remotely for different scenarios	YES	NO
Scalable	YES	NO
VOIP interface	YES	NO
Health indicators	YES	NO
Indoor and outdoor	YES	NO
Detection Data collection for advance analytics	YES	NO
Ballistic module for weapon caliber identification for indoor and outdoor	YES	NO
Managing unlimited contact lists	YES	NO
Text to speech Engine	YES	NO
Able to controls multiple buildings with multiple scenarios	YES	NO
Open REST API protocol	YES	NO